

Supported Cameras

Increased safety support with ANPR



TVT TD-9423A3-LR 2MP HD ANPR Bullet Network Camera



- Lens Size: Motorized zoom lens, 2.8~12mm / Motorized zoom lens, 7~22mm / Motorized zoom lens, 8~50mm
- 2MP (1920 × 1080) @30fps
- Support smart H.265/H.264 coding
- ICR auto switch, true day/night
- Up to 100m IR night view distance; motorized zoom lens
- 3D DNR, true WDR, HLC, BLC and ROI coding
- Built-in micro SD card slot, up to 256GB
- DC12V/PoE power supply
- Support three streams

VIVOTEK IP9165-LPR License Plate Recognition Box Camera



- Lens Size: 9-50mm Vari-Focal
- 1920x1080 Resolution
- Remote Focus, i-CS Lens Type
- 3D-DNR
- 2 Way-Audio
- ANPR Detection speed: 0-90Km/h
- Click to view Specifications

PROVISION ISR I6-320LPR-MVF2



- Lens Size: 7-22mm Motorized Vari-Focal
- 60M IR 2MP Motorized lens LPR bullet camera
- 1920x1080 Resolution
- 3D-DNR
- IP67
- 2 Way-Audio
- Alarm In + Out
- LPR Detection speed: 0-70Km/h
- Click to view Specifications

Dahua IPC-HFW7442H-Z4VH PM IR Bullet WizMind Network Camera



- Lens Size: Motorized vari-focal 8 mm-32 mm
- 4MP, 1/1.8" CMOS image sensor, low illuminance, high definition image
- Max outputs 4MP (2688 x 1520) @50 fps/60fps.
- H.264&H.265 coding, high compression ration.
- High dynamic, day/night, 3D NR, AWB, HLC, BLC.
- ROI, SVC, SMART H.264+/H.265+, flexible coding, applicable to various bandwidth and storage environments.
- With deep learning algorithm
- Click here to view Specifications



Dahua ITC231 2MP AI DeepSense ANPR Traffic Camera



- Lens Size: 10.5 – 42mm varifocal lens
- 1/1.9" Starlight, high color reducibility, high sensitivity, super Low-Light effect
- 2 MP, HD 1920×1080, H.265, @ 50/60 fps
- Embedded integration component design, built-in a variety of algorithms, such as ANPR, traffic data collection and analysis, vehicle type classification, traffic incidents detection, vehicle brand detection etc.
- Support regional cropping, details can be seen with low bandwidth.
- A variety of signals, data and communication interface. IP66
- [Click to view Specifications](#)

Dahua ITC431 4MP IR AI ANPR Camera



- Lens Size: Motorized vari-focal lens 10 mm-50 mm
- Max ANPR distance: 30 m
- Impressive image quality: Adopts ultra-starlight CMOS image sensor with high sensitivity, high SNR, and excellent WDR, providing lifelike images 24/7.
- Complete intelligence: High-performance CPU processor helps extract and analyze vehicle metadata, providing vehicle feature details for business decision-making.
- Multiple scenarios: Ideal for multiple traffic scenarios with the functions of road conditions monitoring, traffic flow statistics, and event detection. Supports IR mode at night for reduced light pollution.
- High-level protection: Integrated design with low power consumption, built-in lightning protection module, and IP67 protection grade, suitable for various harsh environments.
- [Click here to view Specifications](#)

Hikvision 4 Line "Darkfighter" DS-2CD4A26FWD-IZS/P 2MP IR Array Bullet Network Camera



- Lens Size: Vari-focal Lens 6mm - 12mm / 8mm - 32mm
- Full HD1080p video up to 60fps
- Ultra-low light; 8~32mm Motorized VF lens with Smart Focus
- WDR; Up to 50m IR range
- Full Smart Feature-set
- Audio/Alarm IO
- Support SD/SDXC Card
- IP68
- [Click here to view Specifications](#)

Hikvision 7 Line Gen 1 - DS-2CD7A26G0/P-IZS 2MP DeepinView ANPR Moto Varifocal Bullet Camera



- Lens Size: Vari-focal Lens 6mm - 12mm / 8mm - 32mm
- High quality imaging with 2 MP resolution
- Excellent low-light performance via DarkFighter technology
- Clear imaging against strong back light due to LightFighter technology
- License Plate Recognition
- Efficient H.265+ compression technology to save bandwidth and storage
- Advanced streaming technology enables smooth live view and data self-correction in poor network
- 5 streams and up to 5 custom streams to meet a wide variety of applications
- 6 behavior analyses, 3 exception detection, and face detection
- Water and dust resistant and vandal proof (IP67 and IK10).
- [Click here to view Specifications](#)





- Lens Size: Vari-focal Lens mm - 12mm / 8mm - 32mm
- High quality imaging with 2 MP resolution
- Excellent low-light performance via DarkFighter technology
- Clear imaging against strong back light due to 140 dB WDR technology
- License Plate Recognition
- Efficient H.265+ compression technology to save bandwidth and storage
- Advanced streaming technology that enables smooth live view and data self-correcting in poor network
- 5 streams and up to 5 custom streams to meet a wide variety of applications
- Water and dust resistant (IP67) and vandal proof (IK10)
- [Click here to view Specifications](#)



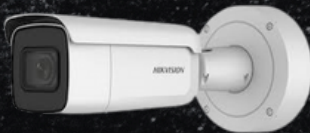
- Lens Size: DS-2XM6425G0/F-L80(2mm)STD/Uni(unpack) / DS-2XM6425G0/F-L80(4mm)STD/Uni(unpack)
- High quality imaging with 2 MP resolution
- Face capture by deep-learning technology
- Audio and alarm interface available
- Built-in Micro SD / SDHC / SDXC card slot, up to 128GB
- 6 behavior analyses, 3 exception detection, and face detection
- [Click here to view specifications](#)

Hikvision IDS-TCM403-BI 4 MP High Performance IR ANPR Bullet Camera



- High quality imaging with 4 MP resolution (1/1.8" CMOS)
- Clear imaging against strong back light due to 140 dB WDR technology
- Built-in ANPR engine, equipped with AI algorithm
- Efficient H.265+ compression technology to save bandwidth and storage
- Water and dust resistant (IP67) and vandal proof (IK10)
- [Click here to view specifications](#)

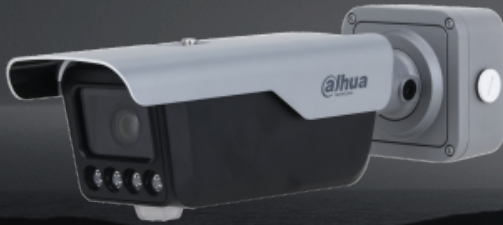
Hikvision 4MP DeepinView ANPR Moto Varifocal Bullet Camera



- Lens Size: Vari-focal Lens 6mm - 12mm / 8mm - 32mm
- High quality imaging with 4 MP resolution
- Excellent low-light performance via DarkFighter technology
- Clear imaging against strong back light due to 140 dB WDR technology
- License Plate Recognition
- Efficient H.265+ compression technology to save bandwidth and storage
- 5 streams to meet a wide variety of applications
- Water and dust resistant (IP67) and vandal proof (IK10)
- [Click to view Specifications](#)



ITC413-PW4D Series



Dahua Access ANPR Camera

- High-performance CMOS image sensor and processor that supports continuously extracting metadata 24/7.
- Adopts intelligent deep learning algorithms and supports recognition of unlicensed vehicles and the type, brand and color of vehicles.
- Built-in signal port, data port, communication port and remote controllers assist in controlling external devices such as entry and exit barriers.
- Built-in LED for simplified installation and commissioning.
- All-in-one structure with junction box and bracket, and it is also low power consumption.
- IP67 and IK10 rated.
- Supports intrusion and loitering detection and triggers light and voice alarms when perimeter events occur to actively deter targets. Custom audios can also be imported and edited.
- Easily adapts to scenarios through its motorized vari-focal lens.

DHI-ITC413-PW4D-Z1, DHI-ITC413-PW4D-IZ1:
2.7 mm–12 mm (lens for booms)

DHI-ITC413-PW4D-Z3, DHI-ITC413-PW4D-IZ3:
8 mm–32 mm (lens for road use)

Hikvision 4MP DeepinView ANPR Moto Varifocal Bullet Camera

- High quality imaging with 4 MP resolution
- Excellent low-light performance via DarkFighter 2.0 technology
- Clear imaging against strong back light due to 150 dB AWDR technology
- Efficient H.265+ compression technology to save bandwidth and storage
- 5 streams to meet a wide variety of applications
- Water and dust resistant (IP67), vandal proof (IK10) and corrosion resistant (NEMA 4X, optional)
- High frame rate, up to 2MP@120fps and 4MP@60fps
- Built-in heater to ensure clear image under rainy or snowy weather
- Built-in G-sensor for vibration detection
- Built-in power meter for historical power statistics
- License plate recognition and vehicle attribution recognition
- Models available
 - iDS-2CD7A46G2/P-IZHSY/5G
 - iDS-2CD7A46G2/P-IZHS
 - iDS-2CD7A46G2/P-IZHSY
 - iDS-2CD7A46G2/P-IZHSY(6-132mm)
 - iDS-2CD7A46G2/P-IZHS(6-132mm)



navic™

National Vehicle Intelligence Cloud



70 Victoria Street, Somerset West, Western Cape, 7130

Tel: 021 879 0926 | info@navic.cloud | www.navic.cloud | NAVIC (Pty) Ltd